

Newsletter January & February 2019

HERITAGE – THE TIE THAT BINDS

BC Heritage Week runs this year from February 18th to 24th. See poster on the last page.

Join the City of Maple Ridge, the Community Heritage Commission, and Historical Society in celebrating BC Heritage Week in our community of Maple Ridge with these fun and educational events!

Visit our website for a full schedule which includes details on walking tours of the cemetery and downtown, speaker series, heritage awards, and a behind the scenes tour of the museum. Admission to the museum is also free for heritage week!

A NEW YEAR NEW AND CONTINUING EVENTS

We are excited for a new year here at the museum with new and continuing events. Our continuing events will include our Speaking of Art and History speaker series at the ACT in May and October, Cemetery Clean up's throughout the summer, Music on the Wharf concert series in July and August, and our Spooktacular Halloween event at Haney House in October. Our new events will include ongoing Murder Mystery nights, spring break mystery event, Paranormal Night at Haney House in October with a local paranormal group, and Escape the Room puzzle adventures at Haney House. As these events come up we will include details in upcoming newsletters so stay tuned!

AGM IN MARCH

Please mark your calendars for March 21 at 6:30pm when we will have our Annual General Meeting and PotLuck Supper. It's always a good time with good food. Plan to show your support for our society. More information will be circulated closer to the date.



TAMPERING WITH TEMPERANCE: A HANEY HOUSE MURDER MYSTERY

On February 9th, from 7 to 9 ,we will be hosting a Murder Mystery Night at Haney House. Murder mystery nights are a “who done it” mystery game, played by getting into an assigned character (dressing in costume is encouraged but optional) and trying to find who among you is the murderer.

You can sign up on our website under events or on Eventbrite. If you have never taken part in a murder mystery game before then no problem! Character and costume information will be sent out after registration, two to three weeks prior to the event. To get a taste of what the event has in store, here is a preview to the story...

It was February 1929, in the month of St. Valentine, when death came to Speakeasy, Maple Ridge. This Valentine's Day season, put on your flapper and mobster best, and travel back in time to solve the tragic mystery of who killed Tommy Gunn. Was it Al Kohol? Was it his girlfriend? Was it you?



OUT OF THE BOX

HOMEMADE SLED FROM THE 1950S

We have had such a mild winter so far this season it is hard to remember that throughout Maple Ridge's history we would experience blistering cold, snow, and ice. Children particularly were the ones who would make best use of season and its potential fun.

Most years Whonnock Lake and Kanaka would freeze over, providing a great surface for skating. Sometimes even the Fraser would freeze over. In 1946, a particularly bad winter, it froze 23 inches deep. But possibly the most fun a kid could have in the winter was sledding.

This sled is a reminder of that fun and excitement. It was donated to us by Ted Reynolds and was handmade for him by his father in the 1950s.

We can only imagine now the excitement that this sled experienced during its use, and despite its age, it is so well constructed that it looks like it could take to the hills today.

Maybe we will get some snow this year and we can all head to the sledding slopes and reconnect with winters past.

MEMBERSHIP RENEWAL

If you have not yet renewed your membership in the Maple Ridge Historical Society remember that there is more than one way to do it. If you go to the membership tab at <http://mapleridge-museum.org/aboutus/join-us/> and scroll down the page you will find PayPal and CanadaHelps options. Both allow you to say what the payment is for.

NEW EXHIBITS

We will have new and rotating exhibits throughout the year. January and February will be your last chance to see our "20th Century Gamer: A History of Computer and Video Games" display on right now in our temporary exhibit room. Beginning in March we will have a new exhibit exploring the history and development of Patent Medicine and will display our large collection of patent medicine bottles. The exhibit, entitled "The Cure All's that Cured Nothing: A History of Patent Medicine" will be on from March until September.

Haney House will also be getting a new exhibit entitled "Haney Through the Decades." Each room of the house will have a different decade featured, with items, clothing, and design specific to a certain decade, from 1880 through 1950. This exhibit will be installed near the end of February so come by to learn about life in Haney and how it changed from decade to decade.

We will also have displays in three library cases in the first floor lobby featuring home craft and crafting projects throughout Maple Ridge history, many of which are becoming lost through time. We will be talking about and displaying quilting, cross stitching, sewing, and knitting from our collection.



Registration is now open for bands wanting to play our summer concert series.

Go to the Event page of our website to find application instructions.

The closing date is March 1, 2018.

HERITAGE

The Tie That Binds

Heritage Week

February 18–24, 2019

Heritage reaches back in time to tell stories of our near and distant pasts, to describe our present and to foretell our future.

These stories are the threads that interweave memory, culture, place, and practice. As we listen and learn, gaining knowledge from elders and experiences, richer stories are told and cultures are described. A complex, interconnected world is revealed, as people and place are woven into a detailed tapestry of history and heritage.

This Heritage Week image is generously provided by On This Spot, heritagebc.ca

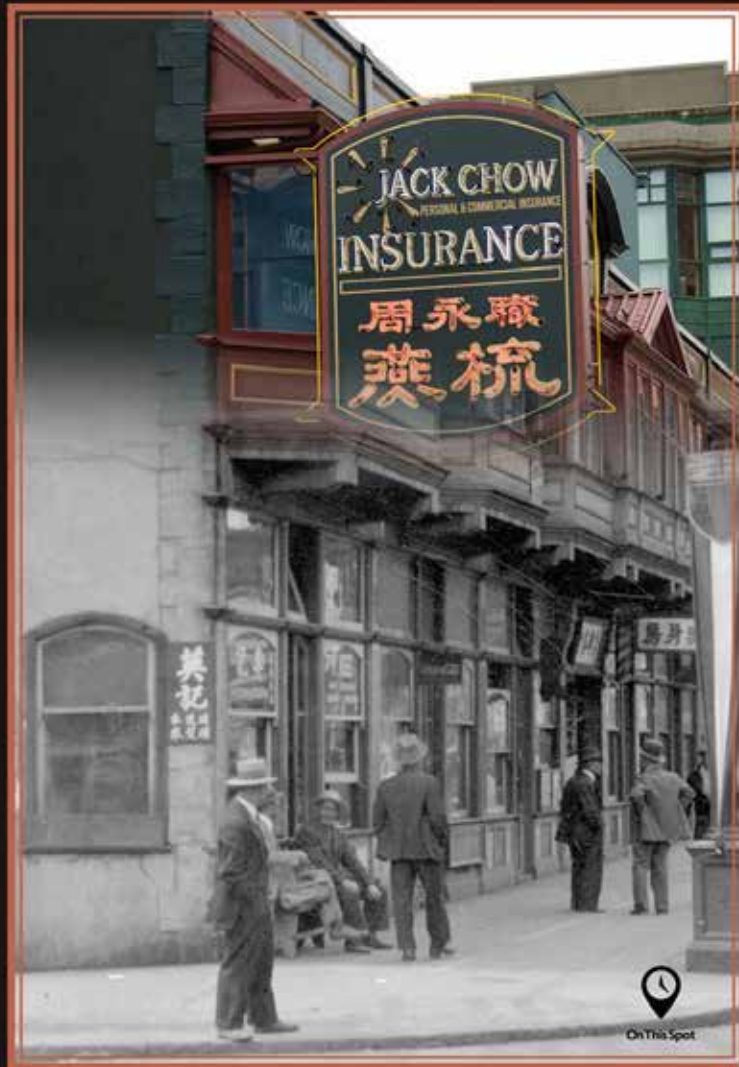
This Heritage Week, celebrate your community by visiting the many unique places and spaces in your community and share your experiences with the world.

#BCHeritageWeek
#MyBCis #MyCanadais

HeritageBC



heritagebc.ca



DEWDNEY-ALOUETTE



Visit the Dewdney-Alouette Railway Society's diorama in the museum.

On the last Sunday of every month, members of the Dewdney-Alouette Railway Society are present to “talk trains” and operate the Diorama. Model Railroaders are welcome on the Tuesday and Thursday evenings before the last Sunday of the month.

Info: Dick Sutcliffe at 604-467-4301 or E-Mail: ras1@uniserve.com

This issue of the newsletter with contributions from Val Patenaude and Shea Henry was prepared by Fred Braches.