

# SPRING BREAK

---

## challenge #10

**During Spring Break, we challenge you to get out and explore Maple Ridge with your families! Every day, we will share a local historic location for you to discover, along with some great discussion and learning points to engage with local history.**

**We encourage you to print off pages 2 & 3 for your kids (or save this document to a mobile device), and go on a new adventure every day during Spring Break.**

**While you're out and about, check out the local EARTH DAY initiative at [www.mrearthday.ca](http://www.mrearthday.ca) with dozens of other challenges and local gems to visit! Be sure to snap a photo during your adventures and share it on social media with #emergeMR for a chance to win some great prizes!**



**MAPLE RIDGE  
MUSEUM**  
& COMMUNITY ARCHIVES

# Discovering Yennadon



P04285 - The original Yennadon (South Lillooet) School in 1931

As we continue to discover the historic communities of Maple Ridge, perhaps, we can more easily identify the community of Yennadon over the more rural areas like Ruskin and Whonnock. Yennadon is quite a large area just north of Haney (today's downtown core of Maple Ridge). The centre of Yennadon is what is now known as 232nd street, but that road was once called the Lillooet Road. The settlements of the area clustered around the river: today, we call it the Alouette River but, in the early days of Maple Ridge, it was called the North and South Lillooet Rivers. It probably won't surprise you to learn that the original name for this community was also Lillooet! However, as there is also a town of Lillooet in the interior, Canada Post asked for a new name before opening up a post office for the neighbourhood in 1911. The area's first postmaster, Mr. E.W. Prowse was asked to pick a name for the region and he chose "Yennadon" after "The Yennadon House", which was his grandfather's home in England.

Unlike many of the nearby townsites, Yennadon was not along the railroad. The absence of a train station, meant that this region stayed mostly rural - rather than becoming a bustling hub of business and commerce. In fact, the Yennadon post office only stayed open for 12 years before the residents' mail was sent to a larger facility for pick up.

There was, however, always a school in Yennadon. The first one was called "South Lillooet School" and it was built all the way back in 1895. The school's very first teacher was Mr. Peter McTavish and he was only 17 years old! Over time, the school has grown and changed names to "Alouette School" and eventually, "Yennadon Elementary".

Throughout recent history (after the settlement of European pioneers), Yennadon has remained an area known for its farming and logging industries, as well as recreation activities along the rivers.



# Today's Challenge



P04203 Alexander Robinson school picnic at Maple Ridge Park in 1927.

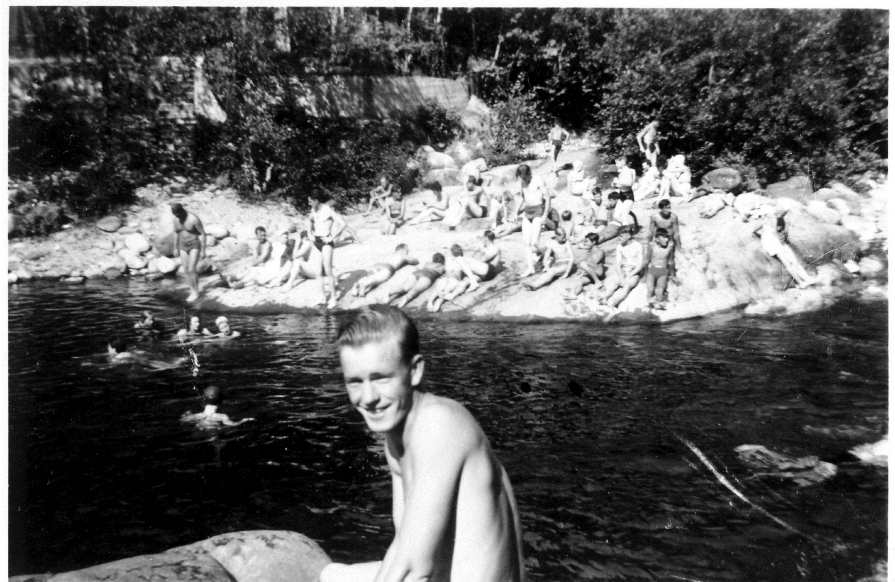
## Explore Maple Ridge Park

At the turn of the century, the land that is now occupied by Maple Ridge Park was managed by the BC Electric Railway Company, as the plan was to use the land when building Alouette Dam. But, in 1924, it was donated to the district of Maple Ridge and it has been a popular park ever since. Summer picnics, dances, parties, and even camping used to be very popular park activities for the local families of Yennadon.

Today, we encourage you to go and explore this beautiful and historically significant park!

## Visit Davidson's Pool & Cross's Cabins Park

After visiting Maple Ridge Park, take a two minute drive along Fern Crescent or enjoy a 20 minute walk east along the Alouette River. Then, you will find Cross's Cabins Park and Davidson's Pool. In 1938, J. H. Cross of Vancouver built a summer home in this spot and then, he constructed several more cabins to house his friends and family for fishing weekends. Over time, the popularity of this area grew and both the park and Davidson's Pool have been popular summer hangout spots with locals for decades.



P03899, 1940s, a young man on the diving platform at Davidson's Pool with bathers on the rocks behind him.

## Learn more about Yennadon:

A short history on Yennadon: <http://mapleridgemuseum.org/yennadon/>

Yennadon Elementary School: <http://mapleridgemuseum.org/yennadon-school/>

Maple Ridge Park history: <http://mapleridgemuseum.org/maple-ridge-park/>

Davidson's Pool & Hot Rocks: <https://www.mapleridgenews.com/opinion/cooling-off-at-davidsons-pool/>

For a searchable online database of Maple Ridge history and lots of other great learning resources, visit us here! <http://mapleridgemuseum.org/>