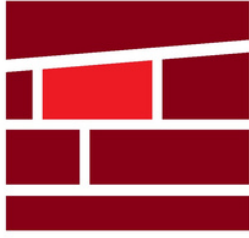


MAY - JUNE 2021



MAPLE RIDGE HISTORICAL SOCIETY



W.B. Piers

Snapshots of a growing community

With our new "Camera In Focus " exhibit opening in the last month, we are taking a closer look at the photography and photographers from our communities history. One of the most prolific photographers of early Maple Ridge was undoubtedly Walter Barrington (Barry) Piers. You might recognize his name from any number of phographs often seen on

website, and around town, of Maple Ridge throughout the 1930's to 1960's. Piers moved to Haney in 1931 to manage the Bank of Montreal when it was located on River Road, the future sight of the Billy Miner Pub. He was the manager who coordinated the move of the bank from River Road to the still present location on 224th and Lougheed. While he was known as a successful banker, manger, and economic factor in the development of Maple Ridge, for the museum he is best known for his photography, which is an invaluable piece of our local history. Piers's photography captured anything from sweeping landscapes to snapshots of everyday life in a rapidly growing Maple Ridge. We value his photography for its artistic style, but also because he had a tendency to capture scenes of "firsts" in our community. He photographed the first gas station, the first buildings to go up on downtown streets, first local theatre, and even the first picnic table in Maple Ridge Park. While these sometimes might seem an odd choice for a photography technology that wasn't exactly instant, we value these photographs so highly because they capture our history, our firsts, our accomplishments, and our changes. In many ways, history is the tracing of change over time and Piers's photography captures that change, which for all intents and purposes makes him one of our early town historians. We currently have one of Piers cameras and several of his photographs on display in our temporary exhibit.



W.B. Piers Series on the building of the Bank of Montreal, 224th and Lougheed. October 1933.



P14255 (1994) Times staff at work

Spring Programs & Community Outreach

*Engaging the community;
one click at a time.*

In a world currently dominated by Zoom calls, Facetime chats, and digital programs, the Maple Ridge Museum continues to expand its reach through online engagement. Most notably, our first ever community survey was circulated through social media in the month of March and garnered over a hundred responses. The input received by the public will be invaluable towards planning for future programs and events at the museum.

Virtual presentations

Even during these difficult times, community groups are keen to learn about history and hear from experienced museum professionals. Our virtual presentations are requested regularly, with the general history of Maple Ridge and the "Strange but True" lectures being the most popular!

Earth Day

Keeping up with the trend of digital events, we were pleased to partner with the Ridge Meadows Recycling Society on their Earth Day 2021 initiative. Locals were encouraged to visit www.mrearthday.ca for dozens of local challenges to explore the community and engage with nature, history, and local businesses.

Spring Break

Using ten of the historic locations that we featured on the Earth Day map, a series of online Spring Break lessons were created. Families were encouraged to visit these heritage sites, learn about local history, and perform follow up activities at home with their school-aged children. Every weekday from March 15 through 26th, a new history challenge was uploaded to our website's learning page which received over 100 visits during that period!

Upcoming Events and Programs

Cemetery Clean Up

Maple Ridge is home to two historic cemeteries that hold nearly 150 years of history. Always a worthwhile reason to spend a few hours outdoors, our annual cemetery clean up will return for another season. Do your part to help preserve our local heritage at any of three events (July 15, 17, & 24). Stay tuned to our website for more details and sign up instructions.



P13682 (1994) Headstones in Maple Ridge Cemetery



P02016 (1960s) Children on a ride at the Albion Fall Fair

Museum on the Move

Currently in its early development stage, our new "Museum on the Move" program will launch this coming summer! If safe to do so, we plan to bring the museum's staff, exhibits, and programs to different areas of our community throughout July and August.

Do you have a business or event that would like to host a display table for a day? If so, we want to hear from you! Send a quick note to: mrmeventplanner@gmail.com

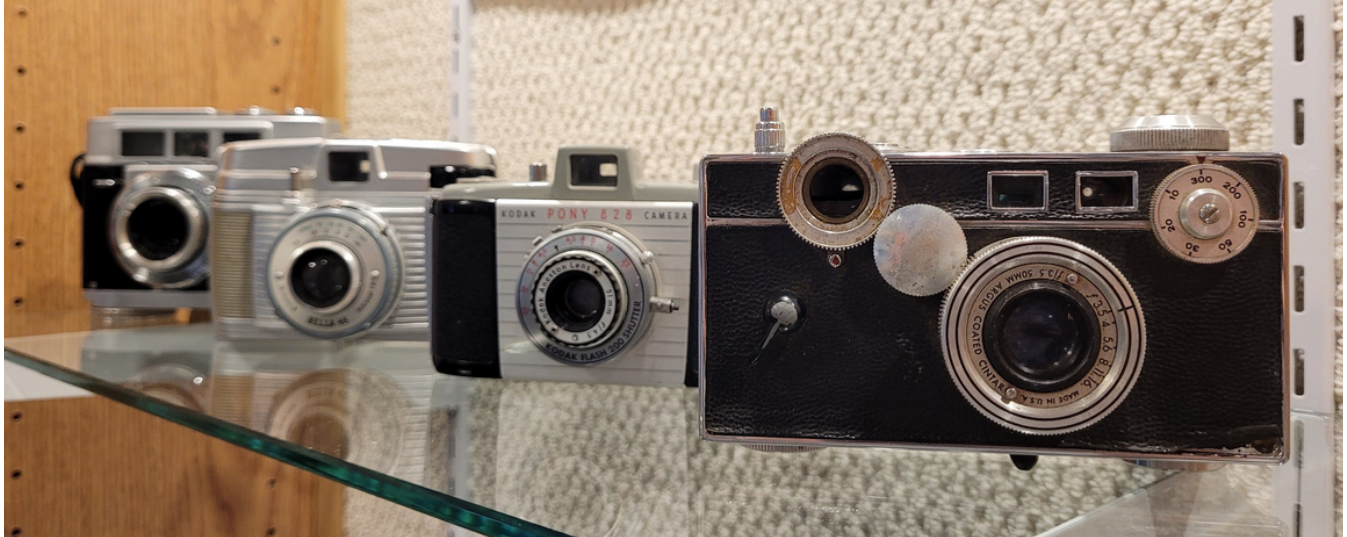
Canada Day drive thru event

In light of the current health situation, Canada Day is going drive thru style this year! We are presently working with the City of Maple Ridge to participate in the exciting event that is being planned for July 1st.

Partnering with the Haney Farmers' Market and other great community groups, we will be representing British Columbia at a fun and unique national holiday experience.

Other events

As we continue to navigate through ever changing and uncertain times, the Museum will keep adapting as needed to continue engaging the community with programs and events. We are looking forward to running a mix of both in person and digital events this summer, as well as offering extended opening hours at the museum. Be sure to follow us on social media to be among the first to hear new program announcements.



New temporary exhibit on cameras

Take a deep dive into the history of this humble invention!

The evolution of cameras is characterized by both the drive to perfect and improve on the science of photography, and the camera industry's response to the general public's overwhelming interest in the technology. The invention and mass marketing of the camera took a resource once reserved for the social elite and made it available to the masses. Eventually it would make it possible for anyone to document and memorialize one's life and made visual information, art, entertainment accessible in a way that hadn't been feasible before. Today, photographs are such an intrinsic part of daily life, it's hard to imagine life without them.

The Camera in Focus: Its History and Evolution explores the history of cameras through the museum's remarkable and surprisingly functional collection of cameras. Up on display until August, the exhibit provides examples of cameras from 1900 to 2010, which belonged to local photographers and camera enthusiasts such as W. B. Piers and Bill Saunders.

DEWDNEY-ALOUETTE



Visit the Dewdney-Alouette Railway Society's diorama in the museum. On the last Sunday of every month, members of the Dewdney-Alouette Railway Society are present to "talk trains" and operate the Diorama. Model Railroaders are welcome on the Tuesday and Thursday evenings before the last Sunday of the month. Note that the DARS train days are cancelled due to Covid-19 for the foreseeable future.

Info: Dick Sutcliffe at 604-467-4301 or

E-Mail: ras1@uniserve.com