

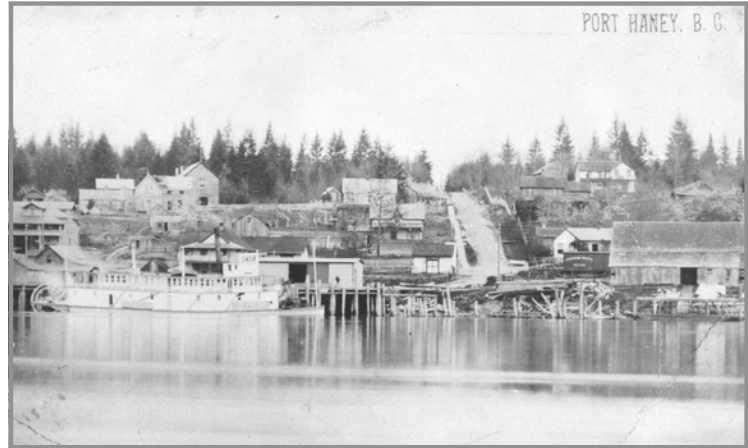


# MAPLE RIDGE HISTORICAL SOCIETY

## ***Wharf Puts the "Port" in Port Haney***

*A brief history of the historic  
Port Haney wharf*

*Pictured: Port Haney and Wharf with a  
steamer docked at the wharf, 1920s. P00407*



It is safe to say that Port Haney would not have become a bustling centre of early settler life without the building of the wharf. The importance of this structure to the early settler years of Haney is often overlooked. While the wood and materials have been replaced over the years, the heritage of the site is still very much intact, with the wharf sitting right where it was originally built, at the bottom of 224th street.

The settler history of the future wharf began with the purchase of a pre-emption by James Wickwire in 1860. The first name for the area was in fact Wickwire's Landing. It wasn't until around 1877 that Thomas Haney arrived to the area and purchased Wickwires 160 acres from him. The area briefly bore the name "Haney's Landing" until 1882 when the wharf was built, turning the landing into a Port. The Canadian Pacific Railroad was in full swing getting their railroad finished and it was at that time that the building reached Maple Ridge. A wharf was then built at the bottom of 224th street (Then Ontario Street) as a landing spot for CPR materials. After that work proceeded on the railway both towards Port Hammond and back towards Mission. The wharf would eventually house businesses, receive goods and persons into the area, and see the shipment of lumber, bricks, frozen fish, and all of the other industrial products of early Maple Ridge. As an aside, our Hammond readers will be delighted to hear that in the early years of Port Haney, the town site was referred to in *The Columbian* Newspaper as a "suburb of Port Hammond."

Since then, the wharf has been renovated, added to, rebuilt and rethought. It is now part of the Maple Ridge Heritage Walk and a lovely place to sit and enjoy a beautiful sunset along the river. It adds a character to the historic neighbourhood of Port Haney and is the best enjoyed during the summer and our annual Music on the Wharf concerts.

The Maple Ridge Historical Society has been throwing an annual concert at the wharf ever since 1996, but the musical heritage of the wharf begins at least as far back as 1899. In late September of 1899 the "New Westminster Bandmen" began a concert at the Guichon Hotel in New West. They then proceeded down to the wharf, boarded the steamer Glenora, steamed their way up the Fraser to Port Haney, along the wharf and up to the Haney Community Hall playing their instruments all the while. They apparently entertained for hours and at midnight played their way back down to the Glenora who had been impatiently tooting its whistle for them to hurry up because it was midnight! According to an article in *"The Province"* most fondest of memories were made that night. While no travelling concerts take place for our bands on the wharf you can be rest assured that fun and excitement of that night lives on 123 years later in the Music on the Wharf concerts throughout the summer. Join us for our annual summer concerts on the wharf and be part of our history our heritage and our community.

## ***Recap: May and June Events***



Guests play Molkkky, Finnish lawn bowling, during our Midsummer event.

On May 8 we held an Alice in Wonderland **Mother's Day** event at Haney House. Guests enjoyed tours with special displays, lawn games, and refreshments and the veranda. We were very fortunate to have tea from **T's/Once Upon a Tea Leaf** and macarons from **Kizzy's Macarons** donated for this event. In early June we had two sold out **walking tours** as part of Senior's Week. We held a Finnish **Midsummer** event at Maple Ridge Museum to celebrate our exhibit, *Sisu: Finnish Resilience in Webster's Corners*, with flower crown making, pulla samples made by our staff, a spinning demonstration, and a dance lesson. The **Vintage Car Club of Canada** visited the museum on June 19, bringing approximately 60 vintage cars. We also participated in **Canadian Multiculturalism Day** at Memorial Peace Park on June 25.



Vintage cars in the parking lot during the VCCC visit on June 19.

## ***Upcoming MotM Appearances***

July 1 - Memorial Peace Park

Event: Canada Day

July 6 - Memorial Peace Park

Event: Happenings - Nature Days

July 9 - Memorial Peace Park

Event: Farmer's Market

July 20 - Maple Ridge Park

Partnership with ARMS

July 23 - Memorial Peace Park

Event: Farmer's Market

August 3 - Memorial Peace Park

Event: Happenings - Family Games Night

August 6 - Memorial Peace Park

Event: Farmer's Market

August 10 - Brickwood Park

Partnership with Family Leaf Drop In

August 20 - Memorial Peace Park

Event: Farmer's Market

August 31 - Memorial Peace Park

Event: Happenings - Family Picnic

September 3 - UBC Research Forest

Partnership with Wild & Immersive

September 25 - ALLCO Park

Event: Ridge Meadows Rivers Day

More appearances are being added all the time! For an up-to-date list, visit:

<http://mapleridgemuseum.org/motm/>

## *Upcoming Events*

### *Headstone Preservation Project*

Maple Ridge Cemetery has graves dating back hundreds of years. Many of the people buried there not only helped found our community, but do not have anyone left to care for their resting place. Every summer locals who value historical preservation help with the important task of cleaning and maintaining the headstones in our cemeteries.

**July 14, 5pm-8pm & July 16, 9am-12pm**

[mapleridgemuseum.org/headstone-preservation-project](http://mapleridgemuseum.org/headstone-preservation-project)

### *Music on the Wharf*

Music on the Wharf is back! Join us for four exciting concerts on the historic Port Haney wharf.

**July 11, 7:30pm: Jason Lane Band**

**July 25, 7:30pm: Etienne Siew**

**August 8, 7:30pm: JD Miner**

**August 22, 7:00pm: Aerika**

<http://mapleridgemuseum.org/events/music-on-the-wharf/>

### *Historic Places Days*

Historic Places Days is a National Trust initiative to encourage people to visit more historic places in Canada. This year, Historic Places Days runs from July 8-31. **Visit Maple Ridge Museum or Haney House during Historic Places Days, take a selfie, post it on your social media and tag us and @nationaltrustca, and you could win \$1000!**



A selfie at Maple Ridge Museum or Haney House could win you \$1000 from National Trust!

### *Croquet, All Day!*

This summer, visit Haney House for a tour and stay for a game of croquet! On select Sundays we will have croquet set up on the Haney House lawn. First come, first served. Each group is limited to half an hour to play. Please check our social media for upcoming Croquet, All Day! times.

### *Walking Tours*

Join Erica Williams, local history expert and president of the Maple Ridge Historical Society, on historic walking tours of downtown Maple Ridge and Maple Ridge Cemetery.

Cemetery tours are the first Saturday of every month. Downtown tours are the first Sunday of every month.

[mapleridgemuseum.org/events](http://mapleridgemuseum.org/events)

## ***New and Improved***

### *Updates Coming to the Permanent Gallery*

Visitors to the museum may have noticed already some of the undergoing changes to the gallery. In June several oversized artifacts were placed back in storage after several years on display, and some display cases were removed. With all of this new space, it was the opportune time to put our large Finnish floor loom on display.

Well, in the upcoming month more changes are scheduled for the permanent gallery. The museum will be closed to the public from July 18-24th to complete a much needed facelift to the gallery space. In that time, display cases will be refurbished and new cases brought in. Overhead lighting will be installed and current lighting will be upgraded. The gallery's walls will be getting a fresh coat of paint and it's wood panels polished.

After this, the real work begins with current permanent displays being changed out for new ones. Members and visitors can expect to see new and exciting displays in the following months, with the addition of new interactive activities to keep kids of all ages entertained and actively learning.



DEWDNEY-ALOUETTE



Visit the Dewdney-Alouette Railway Society's diorama in the museum. On the last Sunday of every month, members of the Dewdney-Alouette Railway Society are present to "talk trains" and operate the Diorama. Model Railroaders are welcome on the Tuesday and Thursday evenings before the last Sunday of the month.

Info: Dick Sutcliffe at 604-467-4301 or

E-Mail: [ras1@uniserve.com](mailto:ras1@uniserve.com)

## ***Notes from the Archivist***

Gordana Dimovska  
MAS, MLIS

Greetings! I joined the Community Archives as a student in 2021 and returned as the new full time archivist in June. I am thrilled to be the first archivist to take on the challenge of modernising and opening up our large collection of archival records. I strongly believe in the concept of a record as evidence: of history, of day-to-day life, of government, and (most importantly) of **us**. The job of an archives is to facilitate preservation and access to records and I am committed to offering both to you, the Maple Ridge community.

Although we had our soft opening in February of this year, the upgrades to our archives facility are an ongoing project. Here is what we plan for the near future:

- A records reading room for up to two parties at a time, accessed by appointment
- An upgrade of our server system allowing for more stable digital storage
- A digitisation project for our large collection of issues of The Gazette
- A database change to a flexible system allowing us better access to information on our holdings, with the possibility of **full public access** to our inventory
- Rehousing and preservative maintenance of our physical records

I look forward to helping the community research the history of this city, local characters, or their own families (my favourite). Hope to see you soon!