

# ***MAPLE RIDGE HISTORICAL SOCIETY***

---

## ***Maple Ridge and its Apples***

How this delicious and versatile fruit put Maple Ridge on the map.

It is that time of year again when the leaves start to fall, the breeze gets cooler, the days get shorter; its apple season. We often look towards the larger industries of our communities' history to tell the story of how Maple Ridge grew and thrived. And of course after the first settlers came in the 1870s fishing, farming, brickmaking and logging certainly did build the town, but the humble apple is so often overlooked. In those earliest years of the settler era, the 1870s and 1880s, the industry of note in the area was certainly apples. Needless to say, the story of Samuel Robertson and his apple orchard is well known to us at this point. Samuel Robertson, employee of the Hudson Bay Company at Fort Langley, would row across the river into Kwantlen Territory to plant apple trees, until such time as he could purchase his pre-emption on the land, which he did in 1858. It was at that time that the Colony of British Columbia government formed and created crown land out of Indigenous land across the province, opening them up for purchase from the newly formed government. At the time, Sam Robertson had purchased land from what would become Albion flats, where he already had a thriving orchard. Robertson ran a successful orchard for many years to come, planting numerous varieties of apples that could be harvested and sold at different times of year for varied purposes from eating to hard cider making.

After the formal establishment of a colony, the BC government strove to bring in as many settlers as possible to populate the land with farms and industry. A major early selling point for the Maple Ridge and Pitt Meadows area was the perfect soil for fruit farming, as evidenced by the thriving orchards of Samuel Robertson. Articles in the New Westminster Columbian in the 1870s and 1880s expound on the great opportunities for fruit farming in Maple Ridge. And indeed when new settlers would come in those early years they would often start with planting orchards and berries. Even Thomas Haney, who purchased the land we know as Haney in the second round of settlement purchases planted a small orchard around his newly built home. Some of those apple trees, which are 150 years old still stand around Haney House today and still bear fruit. One example is the tree behind Haney House, which still produces a small and somewhat sour apple in mid-August. It is so old that while they still lived in the House, the Hawley family reinforced the tree with concrete, which holds up the tree from the inside to this day. The humble apple is an important part of the settlement history of Maple Ridge, and we are excited to celebrate it at our returning Apple Fest October 2nd!



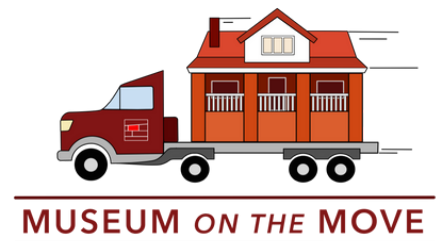
**Mary Hawley-Isaac partway up a ladder harvesting apples in the Haney House Orchard, 1938**



Etienne Siew performing at Music on the Wharf on July 25. Photo by Oliver Rathonyi-Reusz.

## *Recap of July and August Events and Programs*

Summer 2022 was the busiest on record for Maple Ridge Museum. **Museum on the Move** made ten appearances in the community, at four **Haney Farmer's Markets**, three **Happenings in the Park**, at **Canada Day**, at **Maple Ridge Park** in a partnership with the Alouette River Management Society and Fraser River Indigenous Society, and at **Brickwood Park** in a partnership with the Family Education and Support Centre's Family Leaf Drop In Program. **Music on the Wharf** returned to the wharf this year with four fantastic concerts by Jason Lane Band, Etienne Siew, JD Miner, and Aerika. Our annual **Headstone Preservation Project** at Maple Ridge Cemetery proved so popular that we added a third date in August, with a focus on the children's section at the back of the cemetery. Lastly, we introduced **Croquet, All Day!** at Haney House as a way to attract more visitors on Sundays.



September 3 - UBC Research Forest  
Partnership with Wild & Immersive and ARMS

September 17 - Memorial Peace Park  
Event: GETI Fest

September 25 - ALLCO Park  
Event: Ridge Meadows Rivers Day

November 19 - Maple Ridge Seniors Centre  
Event: Repair Café

More appearances are being added all the time! For an up-to-date list, visit:  
<http://mapleridgemuseum.org/motm/>

## *Upcoming Events and Programs*

### ***Malcolm Knapp Research Forest: Past & Present***

Join us for a new partnered event between Wild & Immersive and the Maple Ridge Museum! Come by the Malcolm Knapp Research Forest to learn about 100+ years of history, and look at historical artifacts and archival photos.

This family event will have booths full of amazing historical information, artifacts, activities, crafts, and a family-friendly scavenger hunt!

**September 3, 10am-2pm**

[mapleridgemuseum.org/motm-x-wi](http://mapleridgemuseum.org/motm-x-wi)

### ***Halloween Family Fun***

Drop in to Maple Ridge Museum for some spooky family fun! Participate in a scavenger hunt, make a craft or two, and take home a pumpkin!

**October 29, 11am-3pm at Maple Ridge Museum**

[mapleridgemuseum.org/halloween-family-fun/](http://mapleridgemuseum.org/halloween-family-fun/)

### ***Holiday Ornament Making***

Get into the holiday spirit by making three ornaments for your tree using a variety of techniques and materials, then enjoy some hot chocolate and a treat!

Registration required

\$5 per child

Ages 5+

**December 10, 11-12 & 1-2 at Maple Ridge Museum**

[mapleridgemuseum.org/holiday-ornament-making](http://mapleridgemuseum.org/holiday-ornament-making)

### ***Apple Harvest Festival***

Celebrate Culture Days and visit Haney House to enjoy all things apples to celebrate the harvest and Maple Ridge's apple-growing history!

- Apple samples from Haney House's very own orchard
- Apple cider
- Crafts
- Lawn games (weather permitting)
- Raffle with prizes from local businesses!

**October 2, 11am-2pm at Haney House**

[mapleridgemuseum.org/apple-fest](http://mapleridgemuseum.org/apple-fest)

### ***Paranormal Nights***

Just in time for Halloween, Cornerstone Supernatural and the Maple Ridge Museum bring you an eerie evening of fun at the Haney House. On this 1.5 hour long tour, you will explore the darker side of Haney House's history with a professional paranormal investigation team. Learn about their tools and techniques, and even try them for yourself, while discovering which spirits are lurking within the walls of this old building.

**October 22 and 23. Tours begin every 1/2 hour between 6pm and 10:30pm.**

[mapleridgemuseum.org/ghosthunting](http://mapleridgemuseum.org/ghosthunting)

### ***Walking Tours***

Join Erica Williams, local history expert and president of the Maple Ridge Historical Society, on historic walking tours of downtown Maple Ridge and Maple Ridge Cemetery.

Cemetery tours are the first Saturday of every month.  
Downtown tours are the first Sunday of every month.

[mapleridgemuseum.org/events](http://mapleridgemuseum.org/events)



## Surprising Scraps

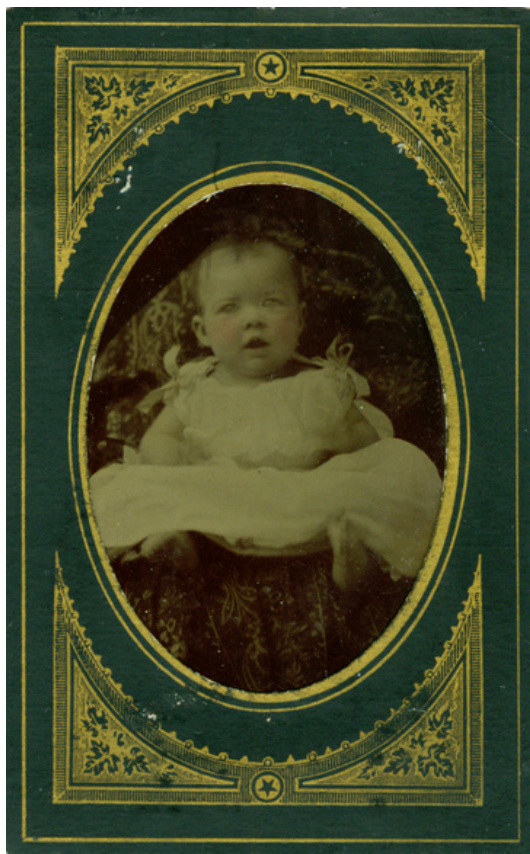
### *Hidden treasures in the office*

The work of an archivist these days isn't limited to donations housed in dimly-lit vaults. To ensure preservation of all historical materials present in our workspaces, drawers and boxes of museum-generated material in the office are often opened and investigated. Most recently, a small metal cabinet housing film and audio media yielded a number of surprising finds.

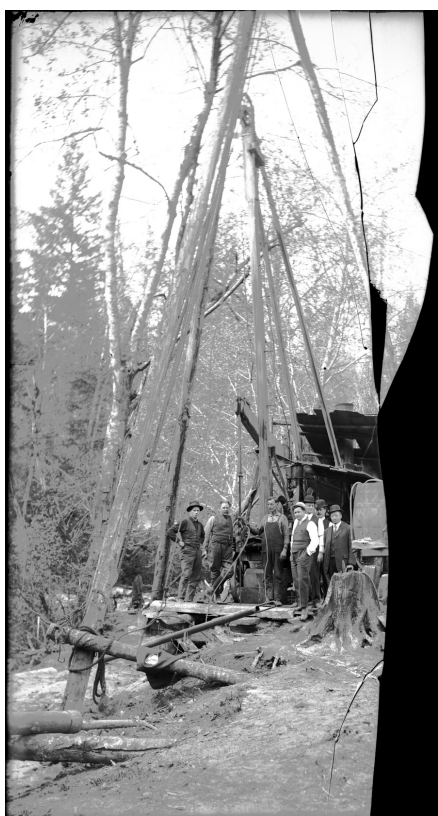
Along with video reels commemorating a visit to Stonehenge in the 1960s and tape made of unknown materials (thankfully found to not be the combustible cellulose nitrate), one of the drawers held a large collection of photographs and negatives generated over the last 50 years. Some of these had probably not been seen for over a decade.

Among them were *glass plate negatives* from the early days of Maple Ridge, like the unfortunately damaged negative pictured to the left. Even more exciting, however, might be the small collection of *tintype* photographs found in the same container. These ferromagnetic photographs were created using thin sheets of metal coated with lacquer that would develop with exposure to light in a camera. Cheap and easy to use, the tintype is no stranger to our collection: many of the photographs held at the Haney House Museum are made of this material. Unusually, the tintypes in the drawer, like the one pictured here, were still in their fancy textured mattes and (like all tintypes) are identifiable by the magnetism of their material.

It's likely that old technologies were held in the drawer for use in our educational programs and exhibits. While the reels are more difficult to access in the modern age, the photographs are ready for the archives. From here, they will be accessioned, scanned, and preserved for future generations of visitors of both the museum and our webfront.



A tintype of an unidentified baby likely ca. 1890.



A shattered glass negative showing a group of men preparing to work in the woods, ca. early 1900s.

## Coming Soon!

*New Japanese Canadian exhibit  
in the works for the Maple Ridge  
Museum*

We are very excited to announce the opening of "What Was Taken: The Internment of Maple Ridge Japanese Canadians". An important part of our local and national history, this exhibit will be opening October 27, 2022 and will remain on display until June 2023.

In 1942, over 20 000 Japanese Canadians were forcibly uprooted from their homes, including 300

families from Maple Ridge.

Through the stories of three of these families, this exhibit will explore what this historical injustice cost Japanese Canadians and how they survived and persevered.



*Hiroshi [Happy] Kawamoto in 1939, posed with his 1937 GMC truck (P04330).*

## How Curious!

*Exciting new exhibit open at Haney House*

Our summer interns have been busy at work all season long working on projects related to programming, the collections, renovations and exhibits. In what is becoming an annual tradition, one of their final projects was creating a new exhibit at Haney House called "How Curious: Oddities of the Victorian Era". Inspired by the historical period in which Haney House was built, "How Curious" highlights the unusual and macabre beliefs and practices of the Victorian era. This exhibit covers a variety of topics from the alternative arts of taxidermy and hair jewelry to the eerie tradition of death photography. We're very excited to share this strangely alluring collection, available to view 10:00am - 4:00 pm every Sunday at Haney House!



*Tori, Camryn, and Kate posed next to a Victorian mourning dress in their new exhibit.*

### DEWDNEY-ALOUETTE



Visit the Dewdney-Alouette Railway Society's diorama in the museum. On the last Sunday of every month, members of the Dewdney-Alouette Railway Society are present to "talk trains" and operate the Diorama. Model Railroaders are welcome on the Tuesday and Thursday evenings before the last Sunday of the month. Note that the DARS train days are cancelled due to Covid-19 for the foreseeable future.

Info: Dick Sutcliffe at 604-467-4301 or

E-Mail: [ras1@uniserve.com](mailto:ras1@uniserve.com)

**Published and printed by the Maple Ridge Historical Society**

**22520 116th Ave. Maple Ridge BC V2X 0S4 | Phone: 604 463 5311**

**E-mail: [mrmuseum@gmail.com](mailto:mrmuseum@gmail.com) | <http://www.mapleridgemuseum.org>**

**A digital version of this and previous newsletters can be found on the Web site under the tab "About Us"**