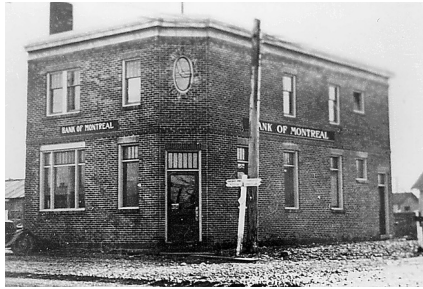
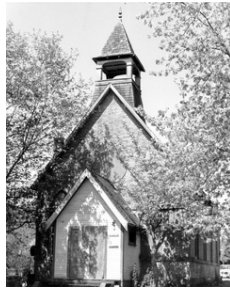


MAPLE RIDGE HISTORICAL SOCIETY



BMO at 224th & Lougheed in 1934



St Andrews Church built in 1888



Brick: Our Heritage Look

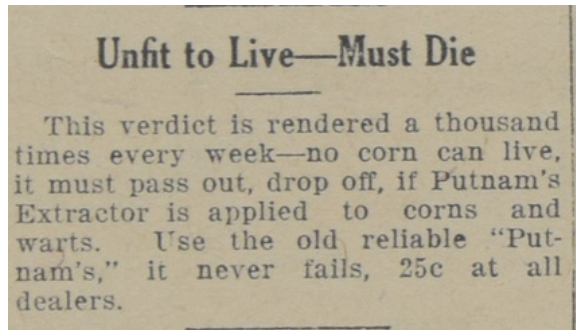
Consider other municipalities in the lower mainland and their use of a heritage look. New Westminster has its high Victorian houses and heritage industrial look. Langley of course makes its name from their heritage architecture; Fort Langley and beautiful Edwardian Farmhouses. Even Port Moody proudly displays its industrial and residential heritage along its brewery row and St. Johns. So how can Maple Ridge make its name from a heritage look? We can do so with both our industrial and geological heritage.

For thousands of years Fraser River has cut its path through Maple Ridge and throughout that time deposited large mounds of clay in what would become the Haney neighborhood. These large clay deposits brought brickmaking settlers to the area who founded several brickmaking operations in and around Haney. Haney brick, specifically those from Haney Brick and Tile Company, were used to build houses and buildings here in Maple Ridge and all over the world. Most notably parts of the Empress Hotel in Victoria is made of Haney Brick. For parts of our history Maple Ridge was known far and wide for its brick, and yet that building style has faded in the very town that profited from it.

There are some examples of heritage buildings locally that have our heritage brick look including the Maple Ridge Museum (old managers house from Haney Brick and Tile Company) the Museum Archives building (Brickyard Office), and St Andrews Heritage Church on 116th. These beautiful buildings showcase this heritage using local clay in a look that is uniquely Maple Ridge, especially in the lower mainland.

New buildings are being built every day and downtown is more than likely going to see a large construction boom in the coming years. When building new in Maple Ridge why not consider heritage through the look of new buildings. Brick facades would bring a unique look to Maple Ridge as well as be a huge draw for filming companies who are always looking for brick buildings. Considering the heritage look in new construction honours our heritage, brings it forward into a new era, and adds to the economic growth of the community. Heritage need not only be preserving the actual brick and mortar heritage buildings but the look of heritage, our heritage.

The Archivists Desk



One of the many surprising items found during research this Summer (The Gazette, February 22, 1923).

In the past year the archives has come a long way. Since the historical society was able to bring on a professional archivist on a temporary but full time contract, she has been working on updating and making the archives accessible. Gordana has worked to modernize our archival database with a new online catalogue that will be accessible to the public soon.

This summer has also seen progress on archival projects, such as processing photograph descriptions, scanning annuals, inventories of boxes long held in the archives, and broadening our research on the Japanese Canadian community of Maple Ridge.

Gordana would like to thank this summer's archives assistant, Yumi, for her help with many repetitive but vital tasks to expand access. Normalizing data is rarely fun and requires a lot of copy-paste action, but being able to see everything we need in one convenient system is worth the effort.

The Curators Desk



Museum collection boxes organized in glorious numerical order.

Like the archives, much progress has been completed towards managing our collections this summer. Behind the scenes work included re-boxing artifacts, finally clearing our backlog in accessions, and squeezing every last square foot of potential storage space out of our buildings.

Despite the reorganization, we remain out of storage space in the museum and Brickyard Office. Our offsite storage, which includes a seacan and two storage units are also full. Given this, we are not accepting artifact donations except in rare situations.

A deep appreciation and huge thanks to Chiara and Kelsey, our Archaeology Repository Assistant and Collections Assistant respectively, for all their hard work this summer. Thanks to their efforts, over 2000 objects have been safely rehoused, and the collection boxes are now ordered in numerical order (small miracles, we know). While Chiara is off to complete her undergrad in Victoria, we are lucky to be keeping Kelsey on through the year as she completes her degree at SFU.

Upcoming Events

Headstone Preservation Project

Maple Ridge Cemetery has graves dating back hundreds of years. Many of the people buried there not only helped found our community, but do not have anyone left to care for their resting place. Every summer locals who value historical preservation help with the important task of cleaning and maintaining the headstones in our cemeteries.

Saturday September 16 9am-12pm (Maple Ridge Cemetery)

mapleridgemuseum.org/headstone-preservation-project

Apple Harvest Festival

Celebrate Culture Days and visit Haney House to enjoy all things apples to celebrate the harvest and Maple Ridge's apple-growing history!

- Apple samples from Haney House's very own orchard
- Apple cider
- Crafts
- Lawn games (weather permitting)
- Sack races
- Prizes

Sunday October 1, 11am-2pm
mapleridgemuseum.org/apple-fest

In the Dead of Night: Paranormal Investigations at Haney House

Just in time for Halloween, Cornerstone Supernatural and the Maple Ridge Museum bring you an eerie evening of fun at the Haney House.

On this 1.5 hour long tour, you will explore the darker side of Haney House's history with a professional paranormal investigation team. Learn about their tools and techniques, and even try them for yourself, while discovering which spirits are lurking within the walls of this old building.

October 13 and 14. Tours begin every 1/2 hour between 6pm and 10:30pm.

****Tickets are limited! Gets yours today!****
mapleridgemuseum.org/ghosthunting

Haunted Haney House

Visit Haney House for a spookily good time! This family friendly haunted house combines Halloween décor, artifacts, and actors that will get you in the mood for some trick or treating.

October 29 & 30. Doors open at 10:30am - Last entry at 3:30pm
mapleridgemuseum.org/haunted-haney-house

Maple Ridge Heritage Award Nominations are now OPEN!

The City of Maple Ridge Heritage Awards are given out each year by the Community Heritage Commission in recognition of special initiatives, accomplishments and projects that have advanced heritage conservation and awareness in our community. The Community Heritage Commission recognizes individuals, organizations, and sites, from either the private or public sector that have contributed to the heritage and/or history of Maple Ridge.



To nominate an individual, group, or organization, please visit:
<https://www.mapleridge.ca/240>

The nomination deadline is October 31st at midnight.

July & August Events Review

July and August are always our busiest months for events. We had a very successful **Music on the Wharf** season. Despite some technical difficulties before the first concert, we had our largest audience ever. We also had our very first children's concert. In total we had 900 people attend Music on the Wharf and received \$1065 in donations. We also had our most successful **Headstone Preservation Project** season, with over 100 people signed up to clean, and four sessions in July and August. Under the Museum on the Move banner we attended **Canada Day, Country Fest, Haney Farmer's Market**, and had three neighbourhood events, in **Hammond, Albion, and Webster's Corners**. We also participated in the annual **Historic Places Days**, which is an initiative by the National Trust of Canada to promote historic places around Canada.

We would like to recognize the hard work of our Programs and Education Assistant, Thorn, who created a lot of the content for our summer events, as well as for upcoming events, and attended ten community museum events this summer. Their energy and enthusiasm will be missed.



Volunteers clean headstones at Whonnock Cemetery on August 12



MUSEUM ON THE MOVE

September 24 - ALLCO Park
Event: Rivers Day

September 30 - Memorial Peace Park
Event: National Day for Truth and Reconciliation

November 4 - Maple Ridge Library
Event: Diwali

November 18 - Maple Ridge Library
Event: Repair Café

More appearances are being added all the time! For an up-to-date list, visit:
mapleridgemuseum.org/motm

DEWDNEY-ALOUETTE



Visit the Dewdney-Alouette Railway Society's diorama in the museum. On the last Sunday of every month, members of the Dewdney-Alouette Railway Society are present to "talk trains" and operate the Diorama. Model Railroaders are welcome on the Tuesday and Thursday evenings before the last Sunday of the month.

Info: Dick Sutcliffe at 604-467-4301 or

E-Mail: rasl@uniserve.com

Published and printed by the Maple Ridge Historical Society

22520 116th Ave. Maple Ridge BC V2X 0S4 | Phone: 604 463 5311

E-mail: info@mapleridgemuseum.org | <http://www.mapleridgemuseum.org>

A digital version of this and previous newsletters can be found on our website under the tab "About Us"