

Newsletter March & April 2018

AGM – MARCH 22

Our AGM will start with a potluck supper at 6:30pm, followed by our meeting. At the meeting we have a couple of important decisions to make so we are really looking forward to a good turnout.

Due to changes in the BC Societies Act, we need to make some changes to our bylaws and we also have an opportunity to change our constitution.

A decade ago, a committee of the MRHS board and several members did a complete revision of our bylaws, which are still a good representation of our group and how it functions.

All we need to do is add a dissolution clause – a statement of where our collections are to go in the event of the Maple Ridge Historical Society coming to an end. In addition, there is a reference to our regional interest that needs to be moved to the bylaws. A copy of our current bylaws can be found at: <mapleridgemuseum.org/05_society/files/05-02-01%20Bylaws.pdf>

CHANGE TO BYLAWS

To add the following to the end as section 13:

13.1 The operations of the Society are to be chiefly carried on in the City of Maple Ridge and the City of Pitt Meadows in the Province of British Columbia.

13.2 On the winding up and dissolution of the Maple Ridge Historical Society, the assets, artifacts and archival materials of the Society, with exclusion of items on loan to the Museums at the time of dissolution, will be transferred to the City of Maple Ridge or its successor, after all debts have been paid or provision for payment has been made.



CONSTITUTION

During the renovation of our bylaws, we also prepared a new, more modern constitution but through a combination of factors, it was never filed. If we can approve the new version now, we can update the constitution as we do the other Society Act changes.

The current constitution – which was created in 1980 – can be found at <http://mapleridgemuseum.org/about-us/governance/>. The suggested replacement is:

1. The name of the Society is the “Maple Ridge Historical Society”.
2. The purposes of the Society are:
 - (a) to provide current, former and potential residents of our community with the means to make our history their own through the collection, preservation, and sharing of our historic images, documents and artifacts;
 - (b) to create a sense of identity and pride both within and outside our community, preserving the past and the present for the future.



Haney Rovers with their parade float, 1958.

COMMUNITY HERITAGE COMMISSION ANNUAL AWARDS

During Heritage Week, the CHC had its annual awards night at the Heritage Church Hall. Those awarded were:

Heritage Commendations: Meridian Farm Market, Maple Ridge Family History Group

Significant Contribution to Preservation of Historical Collection: Black Press - Maple Ridge / Pitt Meadows Times

History and Heritage Research and Publication: Cees Van De Mond

Heritage Project by Youth: Meaghan Durupt

Heritage Buildings: Jeff and Debbi Davis - Harry Residence, 20591 114 Avenue | 31st Alouette
Baden Powell Guild - Rovers DeWolf Den Scout Hall, 23461 Fern Crescent

Stewardship of a Community Cultural Asset: Alouette River Management Society

This year, the Family History Group did a detailed investigation of the Haney-Callaghan-Hawley families so we now have timelines for family members as well as a lot of other details we didn't have before. If you haven't visited Meridian Farm Market, drop by to see the interior decorated with historic photos from our museum collection, not to mention the fine food on offer.

It was good to see Black Press be rewarded for saving all of their negative collections and getting them to good homes. Newspapers with original negatives and prints always need to be encouraged to have a preservation plan for their future.

It was also great to see the Alouette River treated as a cultural asset as well as a natural one. ARMS has done excellent work over the years to protect and promote awareness of the river and its fish.



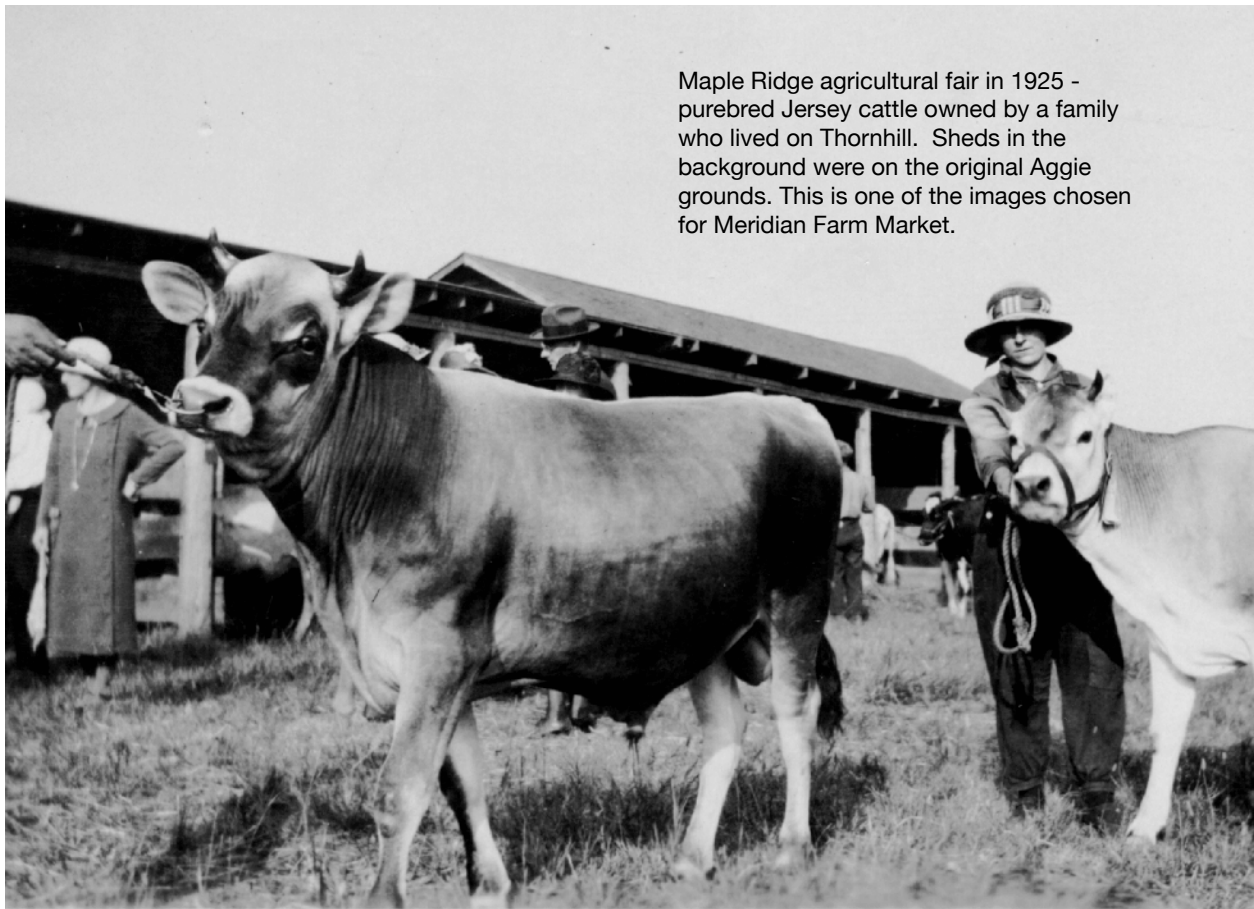
People lined up to tour Haney House when it first opened as a museum in September of 1980.

HANEY HOUSE UPDATES

In February work began on the second phase of renovations; replacing the windows and exterior doors. Vintage Windows is well underway, and we look forward to seeing the results.

We are still waiting on the wallpaper investigation analysis, which will inform the new curatorial changes to the museum. On Sunday, May 27th there will be an open house to share the renovated house with the community along with all the exciting discoveries made during the process. We must always remember that Haney House was built as a simple family home not intended to last for hundreds of years so it will take time and effort to keep this community jewel strong and protected.

Haney House will re-open to the public in June with regular Sunday hours 10 am – 4pm, and then extended hours in July / August, Wednesday – Sunday 1pm – 4pm.



Maple Ridge agricultural fair in 1925 - purebred Jersey cattle owned by a family who lived on Thornhill. Sheds in the background were on the original Aggie grounds. This is one of the images chosen for Meridian Farm Market.

EGG CUPS: LIBRARY DISPLAYS

During the spring the upstairs library cases will showcase some of the museum's "Egg Cup" collection, which originally belonged to Beryl Cunningham, who collected various kinds over the years from her travels, also from thrift stores, and as gifts.

An egg cup, sometimes called an egg server, is a container used for serving soft-boiled eggs with-in their shell. Egg cups can be made of porcelain, pottery, wood, plastic, glass and various metals

The earliest recorded images of egg cups appear in a Turkish mosaic dating from 3AD and examples were found among the ruins of Pompeii from 79AD.

The advent of the egg cup in England is uncertain, but throughout the 18th and into the 19th century, pottery and porcelain egg cups only featured as part of a dinner service and they would have been of a matching style, colour and pattern. During the 19th century, egg cups were produced in their own right as individual pieces of chinaware. Egg cups were very common and were not considered anything special at this time. Many became chipped or damaged. This explains why intact 19th century designs are so difficult to find and why they are expensive.

The double egg cup became very popular in the 1930s. The smaller end would be used to serve a boiled egg in the usual way. The larger end was used to serve the egg chopped, mixed with salt and pepper and eaten with a spoon or fork.

During the early 1900s, the huge growth in railway travel launched a boom in the holiday souvenir trade. Potters were quick to supply cheap souvenir eggs cups, with town crests or an historic scene. *aw*



Two wooden egg cups from our collection. These cups were often given to children at Easter as part of an Easter basket of goodies. The wooden ones are less common than ceramic ones.

NEW FURNITURE AT CHURCH

If you've been to an event at the St Andrews Heritage Church Hall recently you will have noticed that we have retired the old heavy tables and the chairs that were starting to break down. Modern lighter tables and chairs are easier to handle and keep clean. Our regular renters are appreciating the change.

HERITAGE TEA REMINDER

There will be no Heritage Tea put on by the Maple Ridge Historical Society this year. For reasons outlined in our last newsletter, it is not possible to continue with the venue and format currently used so we are taking a year off to regroup.

MUSIC ON THE WHARF

Applications for the 2018 season of MOTW have closed, and we have dates and will soon have a new band roster to announce, so mark your calendars!

July 16, July 30, August 13, August 27

DEWDNEY-ALOUETTE



Visit the Dewdney-Alouette Railway Society's diorama in the museum.

On the last Sunday of every month, members of the Dewdney-Alouette Railway Society are present to "talk trains" and operate the Diorama. Model Railroaders are welcome on the Tuesday and Thursday evenings before the last Sunday of the month.

Info: Dick Sutcliffe at 604-467-4301 or E-Mail: ras1@uniserve.com