

MAPLE RIDGE HISTORICAL SOCIETY

Newsletter May 2012



Nisga'a Museum/Hli Goothl Wilp Adokshl Nisga'a,
810 Highway Drive, PO Box 300, Greenville, BC



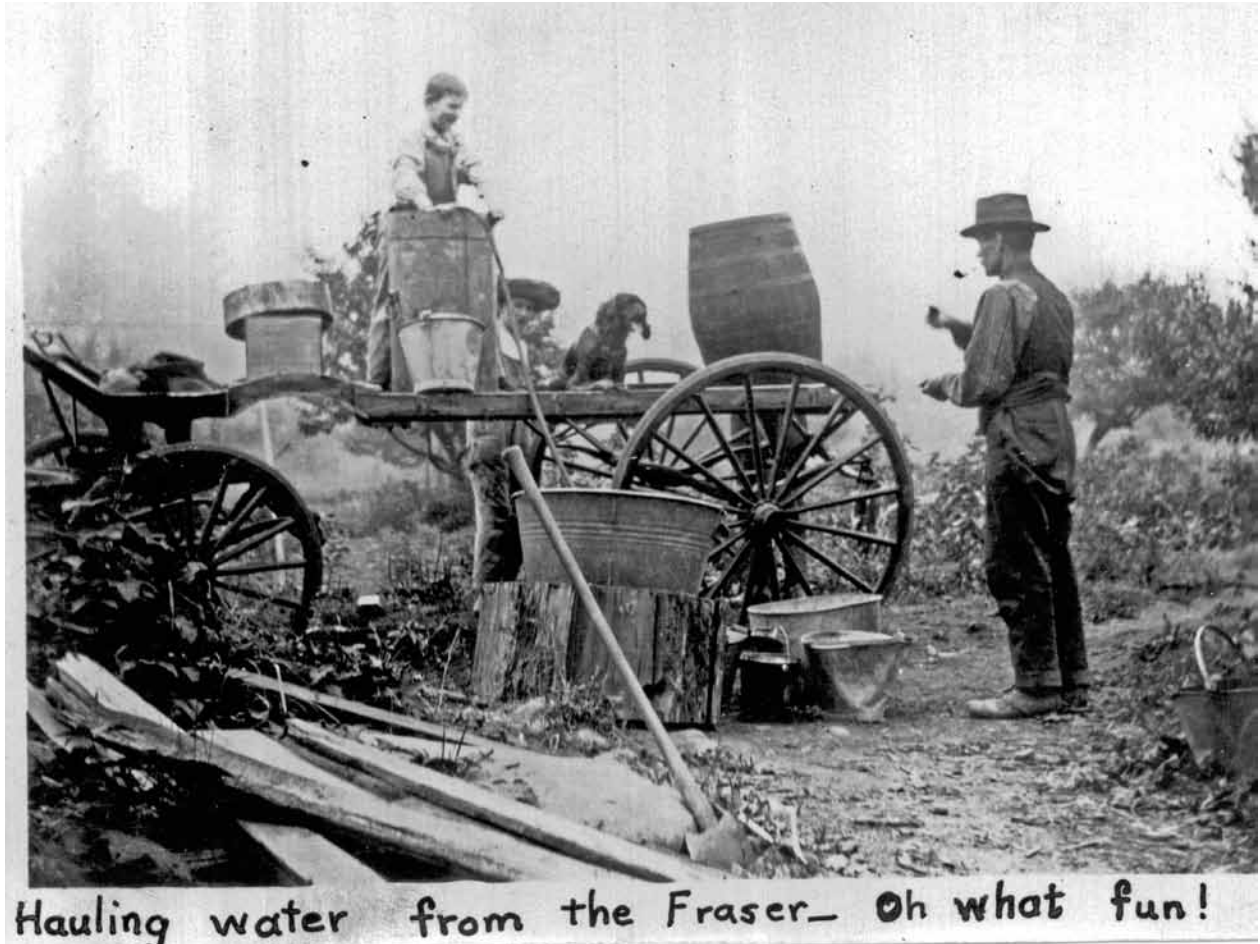
MEETING THURSDAY MAY 24TH

On Thursday May 24th at 7:30 pm at St. Andrew's Heritage Church (22279 116th Ave) **Don Luxton** will be speaking at the monthly members meeting on "The Nisga'a Museum and an Odyssey of Repatriation in Northern British Columbia."

The Nisga'a Museum is a unique institution that is a direct result of the Nisga'a Treaty signed in 2000. This was the first time that First Nations cultural property was repatriated as part of the treaty process in British Columbia. The repatriation occurred on September 15, 2010, and the Museum opened on May 11, 2011.

The Nisga'a Museum is a remarkable accomplishment – a stunning 10,000-square-foot museum built in the remote Nass Valley to display 330 repatriated artifacts. It was also conceived as the cultural heart and soul of the Nisga'a Nation, and as a living embodiment of the Nisga'a culture.

This illustrated talk will highlight the museum's vision, architecture, artifacts and displays.



NEW PICTURES

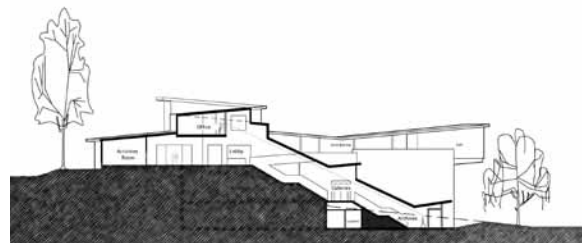
At this year's Heritage Tea we were delighted to be presented with photos from the Graham family of Whonnock. In 1912 the Grahams opened a store in Whonnock opposite the present post office and Showler's (Red and White) store, built in 1919. The store changed hands several times starting in the 1930s until it closed around 1950. The photo set included the above image.

Hauling water was not always fun. The *Coquitlam Star* of 5 September 1914 reports from Whonnock:

"On Wednesday morning Mr. R. S. Whiting [the post master] lost a valuable team of horses by drowning. Mr. Whiting was drawing water from the Fraser for his stock and having filled his barrels on the wharf, started to leave when one of the horses slipped and fell, dragging the other with it into the river. Both were drowned. The wagon, however, was recovered."

FREE FAMILY HISTORY WORKSHOP

On Saturday June 23rd from 11:00-3:00 pm at St. Andrew's Heritage Church (22279 116th Ave) MRHS will be hosting a Family History workshop hosted by the Family History Group. A beginner's start to tracing their family history and showcasing community family history will be some of the topics discussed on the day. The workshop is free for members of the Maple Ridge Historical Society and \$2.00 for non-members. For more details contact Allison at 604-463-5311.





MUSIC ON THE WHARF 2012

The selection committee has reached a verdict on applications for this year's summer concert series! Come and join us on the Port Haney Wharf Mondays at 7:30pm (August 27th at 7pm), and remember to bring your own lawn chair. The committee is also looking for volunteers to assist during the concerts, if you would like to help out please contact Allison at 604-463-5311.

- July 9: Wendy Biscuit Blues
- July 23: Penelope Above
- August 13: Bruce James Orchestra
- August 27: Good for Grapes



CELEBRATING OUR NEIGHBOURHOODS

On Saturday, May 26, from 9am to 2pm, museum staff will host a historic display on the bandstand in Memorial Peace Park alongside the Haney Farmer's Market.

Join us as we celebrate our historic neighbourhoods and identify new ones! Members of the "We Call It Haney!!" Facebook group will also be present and selling Haney themed stickers and other memorabilia.

HERITAGE TEA WRAP-UP

We had another successful year at our annual Heritage Tea, April 14th at the Seniors Centre. We had 204 visitors, 12 of whom brought antiques to be appraised by Al Bowen. Everyone enthusiastically enjoyed the displays, celebrating the reunion grad class of 1960, along with the sandwiches and treats that were so graciously prepared by the many volunteers who made the day possible.

The Program Committee is happy to report a profit of \$220, which will go towards other public programs MRHS puts on, such as the free Music on the Wharf summer concert series. On behalf of the Program Committee we would like to thank all those who attended and to all those who volunteered their time. You helped make this year a great success!



Alison Pocock and Allison White practice setting up for Mother's Day in the parlour of Haney House. (Photo courtesy *Maple Ridge Times*)

MOTHER'S DAY TEA WRAP-UP

The sun was shining on Sunday May 13th for our Mother's Day Tea at Haney House.

Caretakers Tom and Jill had been working to prepare the gardens for spring, and everything was in full bloom. Visitors enjoyed tea and treat on the veranda, as well as guided tours of the house.

Our new summer tour was one of the highlights, most notably Marge Saunder's archery bow, which will be on display at the house all summer. Thank-you to all those who volunteered their time on the day.



Haney's Japanese citizens in front of their Nokai building in 1940.

HANEY NOKAI PARK

Yasutaro Yamaga was a founding member and chronicler of the Haney Nokai—farmers association—formed by and for the Japanese of Maple Ridge.

A new park in west Haney at 222nd and Church Street, just north of the current St. Andrew's United Church, will be named Nokai Park in recognition of the contribution of Yamaga and the Haney Nokai to our community and our agricultural history

During the Second World War the Japanese were so suddenly and thoroughly removed from Maple Ridge—having been 30% of the population—that few people now are even aware that population existed.

Local resident **Lynn Currie** approached the municipality about a name commemorating some aspect of the former Japanese community for the new park as soon as she learned of its impending creation.

With support from information in our archives, she made a convincing case and the new park should be dedicated to the memory of the Haney Nokai in early June. The museum is producing an interpretive sign to go into the park and explain about the Nokai and its role.

To learn more about the Haney Nokai read W. T. (Bill) Hashizume's translation of Yatsuro Yamaga's *History of Haney Nokai*.

Call #:971.1 at the Maple Ridge library.

DEWDNEY-ALOUETTE



Visit the Dewdney-Alouette Railway Society's diorama in the museum.

On the last Sunday of every month, members of the Dewdney-Alouette Railway Society are present to "talk trains" and operate the Diorama. Model Railroaders are welcome on the Tuesday and Thursday evenings before the last Sunday of the month.

Info: Dick Sutcliffe at 604-467-4301 or E-Mail: ras1@uniserve.com

