



MAPLE RIDGE HISTORICAL SOCIETY



Newsletter October 2016

SPEAKING ABOUT ART & HISTORY: DON LUXTON

On Thursday, September 29th the ACT Arts Centre hosted our first speaker's series event, with guest Don Luxton. The presentation and discussion detailed how the heritage conservation movement is adapting to unexpected pressures, and how recent events in Vancouver including the protection of First Shaughnessy and the 'Demolition Derby' occurring in the city's west side, have impacted the city. He elaborated on the Heritage Conservation Area Official Development Plan and how valuable a tool this new data will be in shaping future infrastructure plans.

He discussed a few upcoming projects he is working on with the city of Maple Ridge, including the Haney House and Maple Ridge Museum building context studies, as well as giving advice to owners of heritage houses, and what they can do to protect their investments long term.

HERITAGE INVENTORY

Until October 31, you can still make recommendations for additions to our heritage inventory. The inventory is an important tool for local government as it identifies what the population values most when they think of the history of the community. Buildings are not the only heritage asset – we can also include beloved locations like Hot Rocks or the Buttercup Field and traditional practices or events like our Country Fest fair and the Christmas street decorations. One way to look at it is to think about what you would really miss if you moved away.

Visit the website at <http://www.mapleridge.ca/1384/MRHeritage---Inventory-Project> for more information and a nomination form.

EAT, DRINK AND BE SCARY

Sunday, October 30th,

11 am – 3 pm

Admission \$5.00

What could be a more fitting place to visit on Hallowe'en then Maple Ridge's own Haney House Museum? Come see the 1883 house decorated, with a new fall themed tour, guided from one of our costumed guides. There will also be cookie decorating and a Hallowe'en craft for children to partake in.

Feel free to come in costume, or without, but there are extra treats for those who do dress up!





Hauling baled cardboard to New Westminster in a truck supplied by the Recycling Society of BC in 1979. The photo was taken at the original Cottonwood depot.

NEW ARCHIVAL ACCESSIONS

Over the summer, we received some valuable new collections for the archives.

LOLA CHAPMAN – Widely known for her pioneering work in youth diversion programs, Lola passed away earlier this year. Her program was copied in communities across the country. In Maple Ridge and Pitt Meadows, it is considered to have kept 2,200 youth out of the criminal justice system.

We had some materials from her in our collection from when she was inducted into the Maple Ridge Hall of Fame but since her passing, her family has donated a large number of awards, honours of other kinds and stories about her work.

RIDGE-MEADOWS RECYCLING SOCIETY – This collection includes documentary records and more than 650 photographs that chronicle the development of this most valuable service in our community. It is amazing to see what a very small group of people with few resources were able to accomplish in the early days, compared to the complex and sophisticated operation we see today.

There are strong ties between the Historical Society and the Recycling Society including long-time board member Beryl Cunningham and current board member Julie Koehn – both of whom were involved with recycling from the very beginning.



Recycler extraordinaire Beryl Cunningham sorting magazines in the early 1990s.



Telosky Stadium in the early 1950s with Jack Cameron in the foreground.

LINEDRIVE, CENTREFIELD!

*'Twas a glorious day, how the band did play,
And the sun shone down so bright.
Though the paint was wet, everything was set,
A really wonderful sight.
A few fans roared, when Hammond had scored
In inning number one.
This was only a few, as most of them knew,
The fun had just begun.*

The first few lines from "Opening Day at Pete's Park" by Jim Robson, captures the spirit of baseball – the rush of excitement from the fans as rival teams face off, and the competition between players. He was describing the first game at Telosky Stadium, which opened for the season on May 14, 1950, attracting as many as 3,500 – 4,000 fans for hard-fought games. Pete Telosky on his own land, with his own resources, built the stadium.

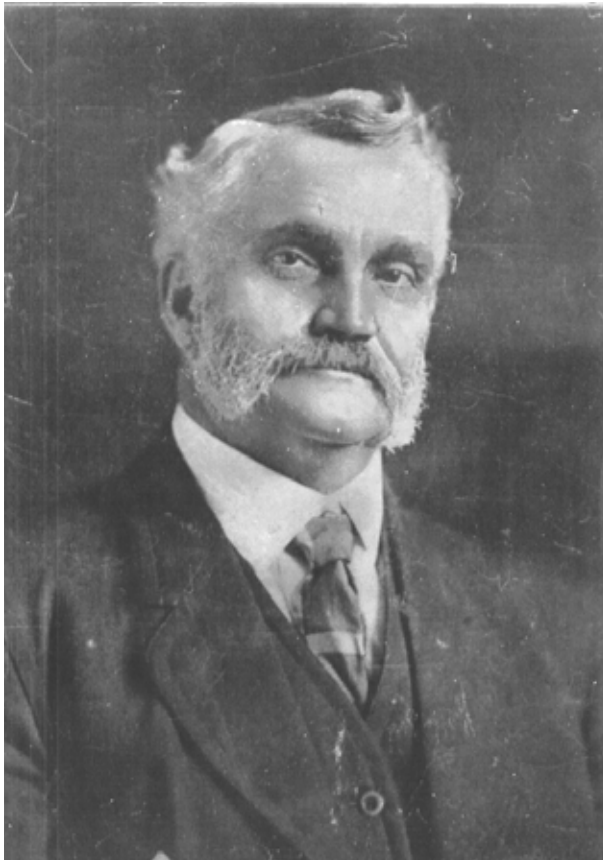
Baseball had always been an immensely popular sport in Maple Ridge well before Telosky stadium was built. The rivalry between the Haney and Hammond teams was famous. D.M. Hartnell, owner and manager of Hammond Cedar,

was known to travel Canada and the United States looking for good baseball prospects to hire to work at his mill so they could play on the mill team.

Our new exhibit on display at the Maple Ridge Museum, "Line Drive, Centerfield!" features memorabilia from both Haney and Hammond teams, in addition to other stories about Maple Ridge's rich baseball history, including artifacts from the Walker family, spanning multi generations. Larry Walker Jr. was a right fielder in Major League Baseball from 1989 – 2005. Playing for the Montreal Expos (1989-1994), Colorado Rockies (1995-2004), and the St. Louis Cardinals (2004-2005). He got his start playing for the Alouettes, where his father, Larry Walker Sr. (who played for both Hammond and Haney), coached.

The exhibit also details the history of the baseball glove itself, the different types and stitching, which have evolved since the late 19th century.

We are looking for more baseball artifacts to add to our collection. If you have any pieces that might be a fit, please contact mrmuseum@gmail.com or phone 604-463-5311.



TRANSCRIPTION JOB

Over the past year, the city has been releasing pdf versions of the old council minutes so we now have access to all the minutes from 1874 to 1931. Some have been transcribed but from 1893 to the end of 1913 they are all handwritten. They are almost entirely written by one man – EW Beckett – who wrote in a style called “copperplate script” that can be very difficult to read. (sample below) We’re looking for some people to help with the transcribing. Contact Val at the museum at 604-463-5311 or mrmuseum@gmail.com if you’re interested.

Left: Ernest William Beckett (1857–1935) came to Maple Ridge from Quebec as a young man. The family started a brickyard in the southern portion of what is now Brickwood Park. In 1895, he was appointed municipal clerk and he remained in that position until 1912. Later in life he was a Crown Timber agent in New Westminster. From 1925 to 1929 he was returning Officer for Maple Ridge. This image came to the museum as an etched copper plate and it wasn't until the advent of modern scanning technology that we were able to get a usable image from it.

Charles Whitham this Court of Revision of the Voters List report that he has not been placed on the Assessment Roll for his improvements and therefore cannot be placed on the Voters List at present. And that a copy of this motion be sent Mr Whitham carried.

From D A Macdonald asking to be placed on Voters List as owner of 5 acres of land bought from James Best on the north-west corner of Mr Bests farm facing the road. And from Geo E Black stating that Mrs Bertha Black should have been placed on Voters list in place of his name.



Above: One of the buildings that Don Luxton will be examining is the brickyard manager's house which is now home to Maple Ridge Museum & Archives.

This is thought to be the original configuration and location of the Burnet house, but is it? After all the revelations about the Haney House, now we're not so sure.

We discovered that the Haney House was built in 1883, not 1878, and that the renovations inside were more extensive in the late 1920s-early 1930s than had been thought. We have also discovered that the original house had no plastered walls – just rough boards covered by muslin and then wallpaper or paint.

SPEAKING ABOUT ART & HISTORY: MICHAEL KLUCKNER



Our next speaker at The ACT Arts Centre will be Michael Kluckner, well-known writer and artist.

On April 13, 2017, at 7pm, he will be discussing his book *Vanishing Vancouver: The Last 25 years*.

DEWDNEY-ALOUETTE



Visit the Dewdney-Alouette Railway Society's diorama in the museum.

On the last Sunday of every month, members of the Dewdney-Alouette Railway Society are present to "talk trains" and operate the Diorama. Model Railroaders are welcome on the Tuesday and Thursday evenings before the last Sunday of the month.

Info: Dick Sutcliffe at 604-467-4301 or E-Mail: ras1@uniserve.com

This issue of the newsletter was prepared by Fred Braches with contributions from Val Patenaude and Allison White.

**MAPLE RIDGE
HISTORICAL SOCIETY**

