

Ready to get Crafting?

INSPIRED BY OUR NEW MUSEUM EXHIBIT AT THE ACT ARTS CENTRE, YOU GET TO DESIGN YOUR OWN 1920'S FASHION OUTFIT! GO GET YOUR ADULT, SOME PENCIL CRAYONS, AND A PAIR OF SCISSORS TO START CUTTING!



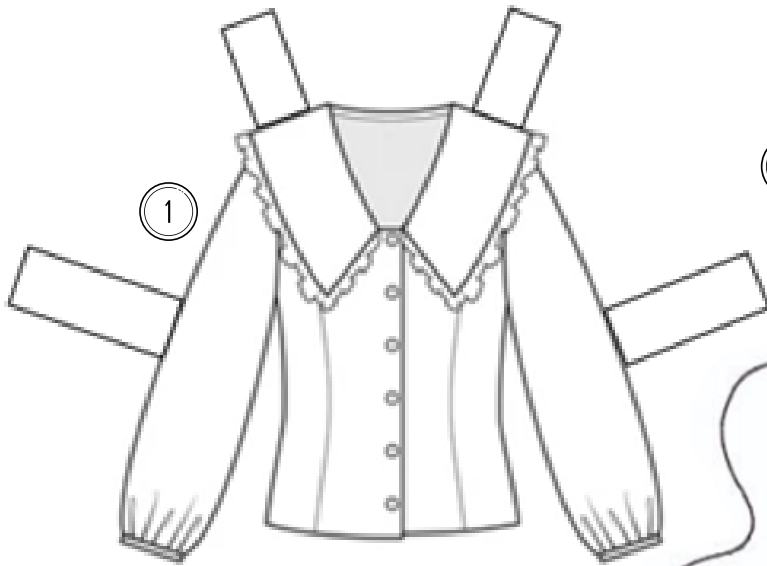
ON THE NEXT PAGE, YOU'LL BE ABLE TO CUT OUT A PAPER DOLL AND THE ITEMS LISTED BELOW, THEN DRESS UP YOUR DOLL HOWEVER YOU LIKE. BE SURE TO HEAD TO THE ACT ARTS CENTRE THIS MONTH SO YOU CAN SEE THESE ITEMS IN REAL LIFE!



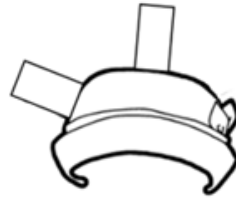
- ① Embroidered Blouse
- ② Waistcoat
- ③ Dress Pants
- ④ Cloche Hat
- ⑤ Flat Cap
- ⑥ Suspenders
- ⑦ Skirt
- ⑧ Bow Tie
- ⑨ Clasp Purse
- ⑩ Dress Shirt

FOR MORE LEARNING,
SCAN THIS QR CODE
TO WATCH A FUN VIDEO
WHERE THE MUSEUM STAFF
SHOW OFF SOME OF THIS
CLOTHING AND GIVE YOU
TIPS & TRICKS ON
CREATING YOUR BEST
PAPER DOLL.

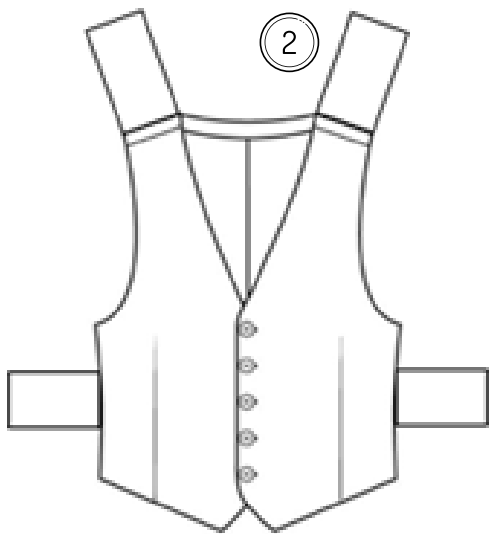
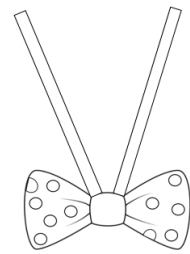




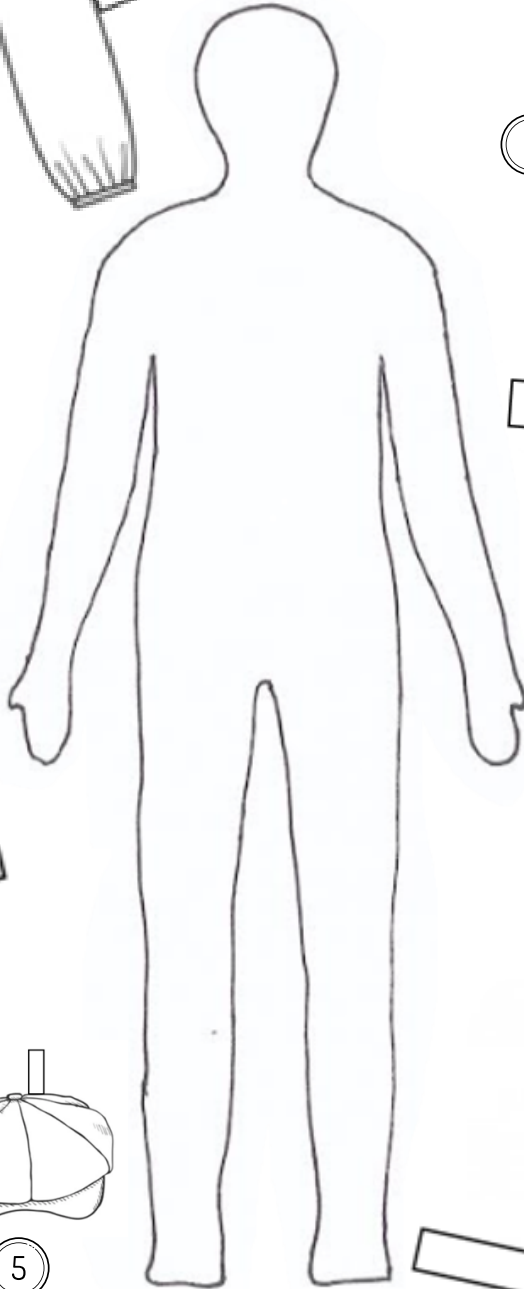
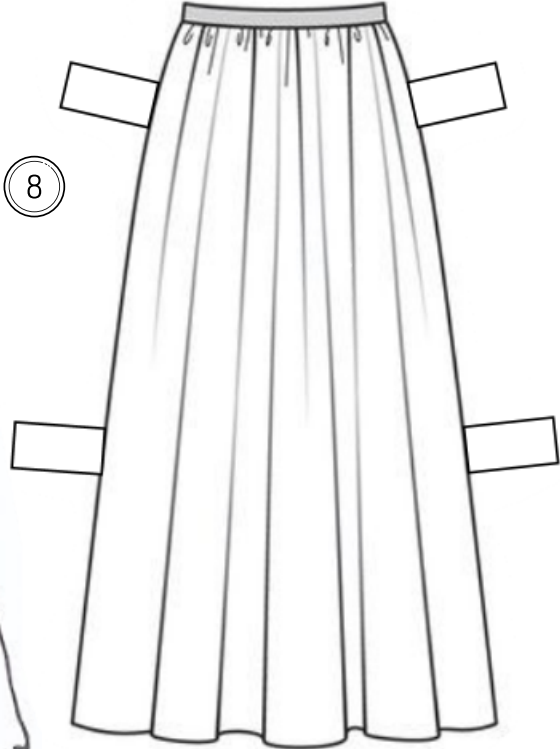
4



7



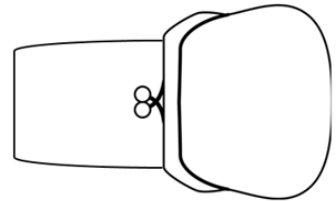
8



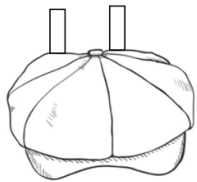
3



9



5



10



6

